



A.H.C MATERIALS manufactures industrial engineered wood products for the construction industry. Using durable hardwoods and waterproof adhesives, the EMTEK crane mat is **half the weight of a typical 12" mat.** Consistently flat on top.



Beams are bolted together with countersunk nuts.





(above) Portable bridge – 20' span



(right) 350 trips across the bridge with chains.



***“We run aggressive chains.
These mats hold up.”***

350 trips – no surface wear.

Scott Madden
Madden Timberlands
Old Town, Maine



“flat... predictable”

Bill Zimmerman
EIC Associates
Jersey City, NJ



***“we run 195,000 lb
on growers all
day long...
our emtek mats
hold up”***

Ned Scrivner
Conestoga-Rovers
Deleware City, DE

Consistent - Durable - Lighter Weight

- 40% the weight of traditional mats
- Mats are flat
- Beams are *glue laminated* and then bolted
- Durable hardwoods

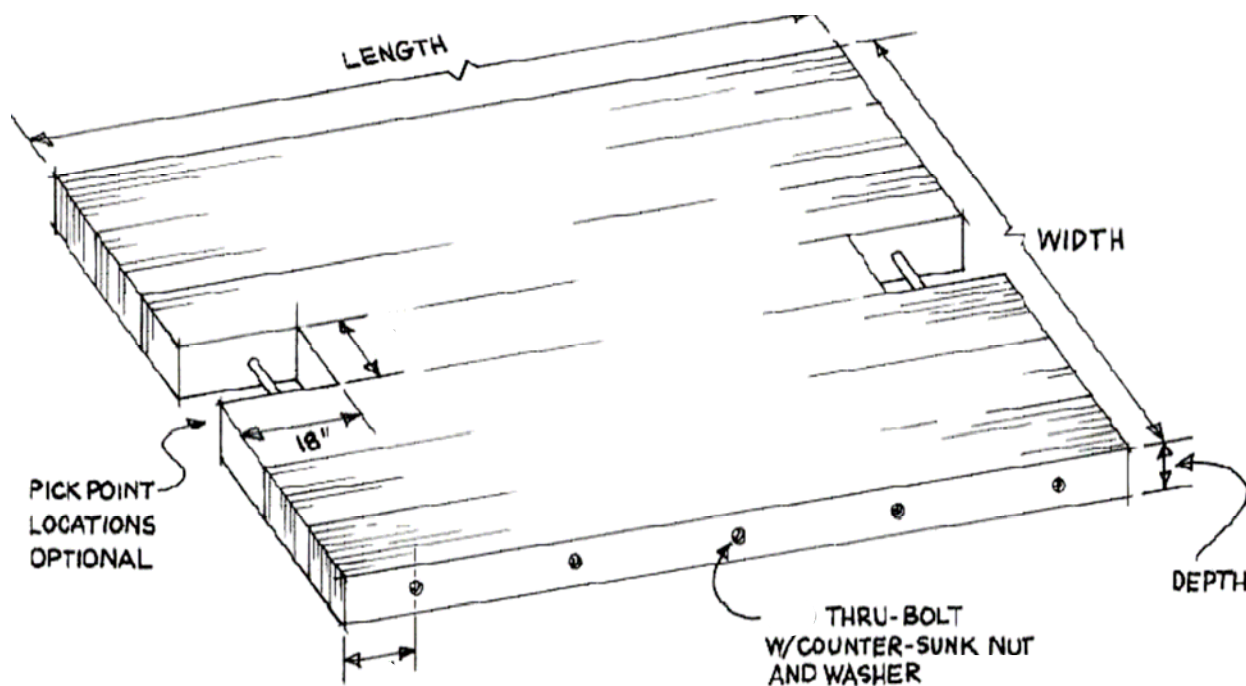
Strength Comparison - #2 White Oak

- 5 1/2" emtek = 12" oak
- 4 1/2" emtek = 10" oak
- 3 1/2" emtek = 8" oak

DESIGN PROPERTIES

		Emtek	#2 white Oak
Bending	Fb (psi)	3100	600
Shear	Fv (psi)	290	105
Stiffness	E (lb-in ²)	1.9	0.8

#2 White Oak values per 1997 National Design Specification for Wood Construction- 5x5 and larger



Depth (in)	Width (ft)	Approx. Wet Weight (lb)				
		16'	18'	20'	24'	30'
5 1/2	4	1469	1620	1807	2136	2611

Mats per Truck by weight (47,000lb)				
16'	18'	20'	24'	30'
32	29	26	22	18

