

Jackson Covered Bridge Rehabilitation

The Jackson Covered Bridge over Sugar Creek is being rehabilitated. Work on the \$1.4 million Federal Aid project is nearly complete. The project included the removal of the roof and siding. The bridge frame was moved off of the abutments for the rehabilitation. The bridge was removed from the abutments in February 2007. The bridge was put back on the abutments in August 2007. Additional information can be found at the following website:

<http://www.parkecountyliving.com/>

June 2006

These pictures were taken in June 2006 and show the condition of the bridge before the rehabilitation began



December 2006

December 26th The siding has been removed from the Jackson Covered Bridge and work has started on the removal of the roof.



January 2007

January 4th The roof has been removed from the Jackson bridge. Equipment has been brought in to work on the approaches in preparation for moving the bridge.

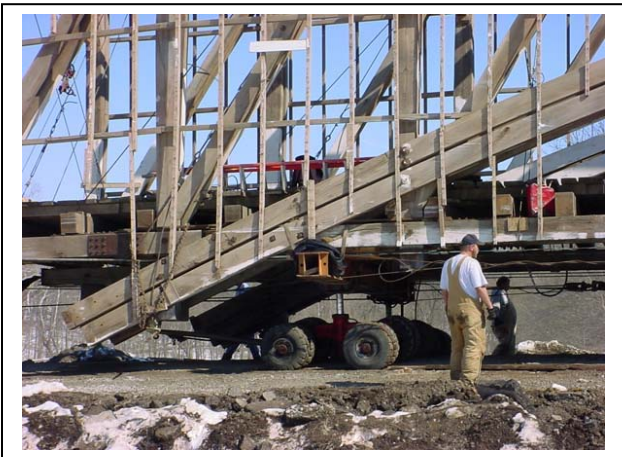


February 2007

February 3rd The temporary bridge is complete and the dollies have been placed under the bridge. The dollies have built in jacks which will be used to lift the bridge. The bridge was to be moved on Tuesday, February 6th, however, the temperature is below 10 degrees. The move has now been postponed until next week when the temperature should be warmer. These pictures were taken from the south side of the bridge.



February 21st The Jackson Bridge was moved off of the abutments and placed on the road bed. The bridge move took approximately 3 hours to be moved. The bridge was pulled using a winch attached to a truck.



March 2007

March 11th The Jackson Bridge has been braced and the reconstruction has started. Some more boards have been removed from the bridge.



March 20th Scaffolding has been erected to support the Jackson Bridge as the original timbers are being removed. The floor has been removed and the arches are being disassembled.



April 2007

April 5th The contractors have removed the bowing of the bridge. (The bridge was twisted and one of the engineers speculated that it had been hit by a tornado.) The lower cords of the west side of the bridge are currently being replaced. The workers have also removed most of the cribbing from the creek, the cribbing was creating a dam and causing bank erosion. New treated laminated timbers are being installed on the bridge. Piles of the new timbers have been delivered for the bridge.

April 15th The siding supports are being removed so the arches can be repaired. The workers have also removed all of the cribbing from Sugar Creek.



April 28th The lower cords on the east side of the bridge are being replaced. The north end of the bridge is also being reconstructed.



May 2007

The damaged wood of the arches have been removed and new lower cords are being installed. Work is being done on the upright posts.



May 10th Here are some of the old joint pieces that were removed from the bridge

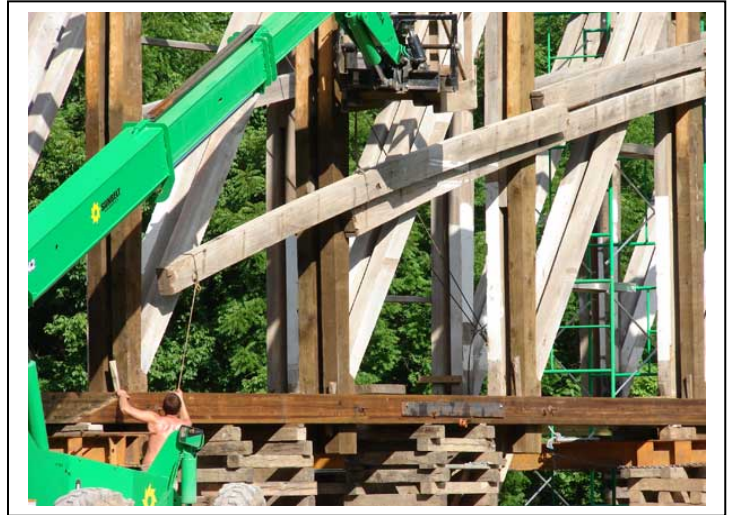


May 25th Piles of new lumber are ready to be installed on the bridge



June 2007

Here are a series of pictures taken while the workers were installing a section of the west arch.



July 2007

July 14th The replacing of vertical posts is ongoing, with only a few left to replace. The construction plan is to install some of the roofing and siding before the bridge is moved back over Sugar Creek. The moving crew was scheduled to arrive the week of July 16th and start preparing for the move. The move is currently scheduled for the middle of August.



August 2007

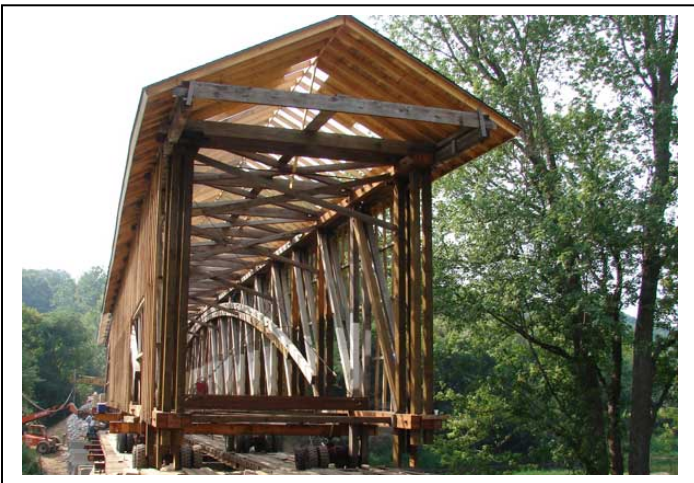
August 7. The workers are trying to get as much done as possible before the bridge is moved back over Sugar Creek. The goal is to have the rafters and the bottom rows of shingles installed while the bridge is on the road. The workers also trying to install as many siding supports as possible. Both of these jobs will go slower if the work has to be completed while the bridge is over the creek.



The decision was made to move the bridge on August 16th. The day the final dollies were installed and the bridge was moved closer to the creek. A winch truck (red truck in background) was placed on the south side of the Sugar Creek. Cables from the winch were connected to the dollies supporting the bridge.



The Jackson Covered Bridge is back in its home among the trees.

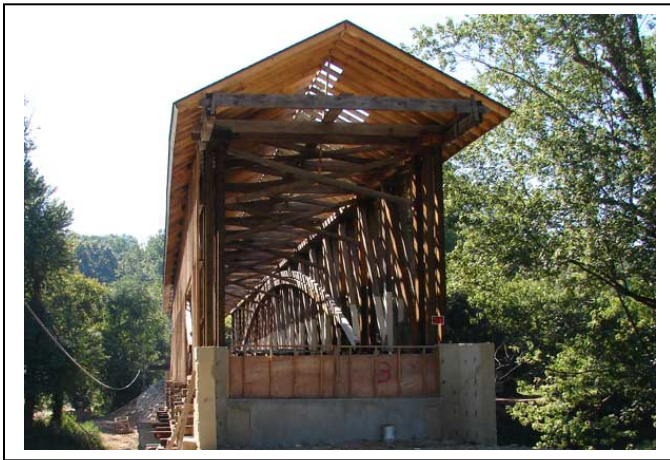


August 22nd The Jackson Covered Bridge is sitting on the temporary bridge over Sugar Creek. The workers are working on the south approach.



September 2007

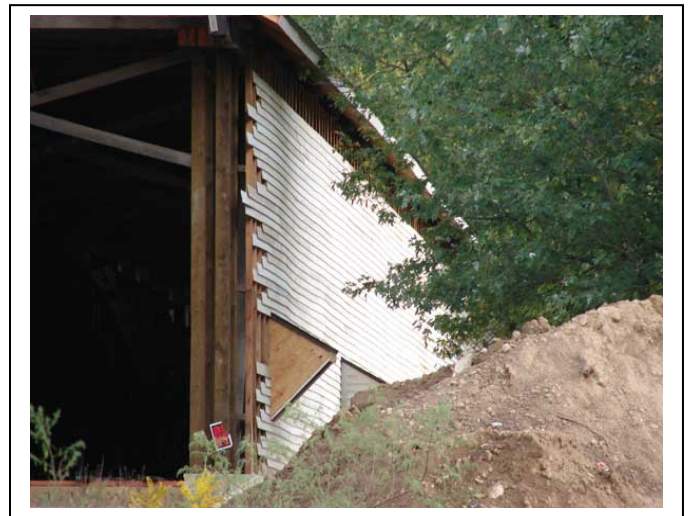
September 3rd The work continues on the north abutments. Forms have been set and concrete has been poured



September 13th. Multiple crews are now working on the Jackson Covered Bridge, trying to get it opened before the Parke County Covered Bridge Festival. The roof crew has completed the new roof. The siding crew has started siding the east side. Major work is still being done on the north abutment.



September 27th The Jackson Bridge is starting to look like the old Jackson Bridge. Most of the siding has been installed. The window openings have also been installed. The north abutment still has significant work remaining. The dog house of the bridge also needs to be constructed.



October 2007

On October 9th the Jackson Covered Bridge was opened to traffic. The bridge made the goal of being opened before the start of the Parke County Covered Bridge Festival. Some small tasks still remain (such as lettering the north end of the bridge). The bridge looks great and was quiet as cars were driving across the bridge.

